

Sharing Scientific Data to Advance Science

Claudia Bauzer Medeiros

Instituto de Computacao – UNICAMP

CCES – CEPID (eScience)

Sharing Scientific **Data** to Advance Science

Claudia Bauzer Medeiros

Instituto de Computacao – UNICAMP

CCES – CEPID (eScience)

Sharing

- WHAT -
- WHY -
- HOW –
- WHO –

Science and beyond

- “Scientists are spending most of their time manipulating, organizing, finding and moving data, instead of researching. And it’s going to get worse”
 - Office Science of Data Management challenge - DoE



Subject of the decade

USP G

@Fabio Porto



| D | C | C

because good research needs good data

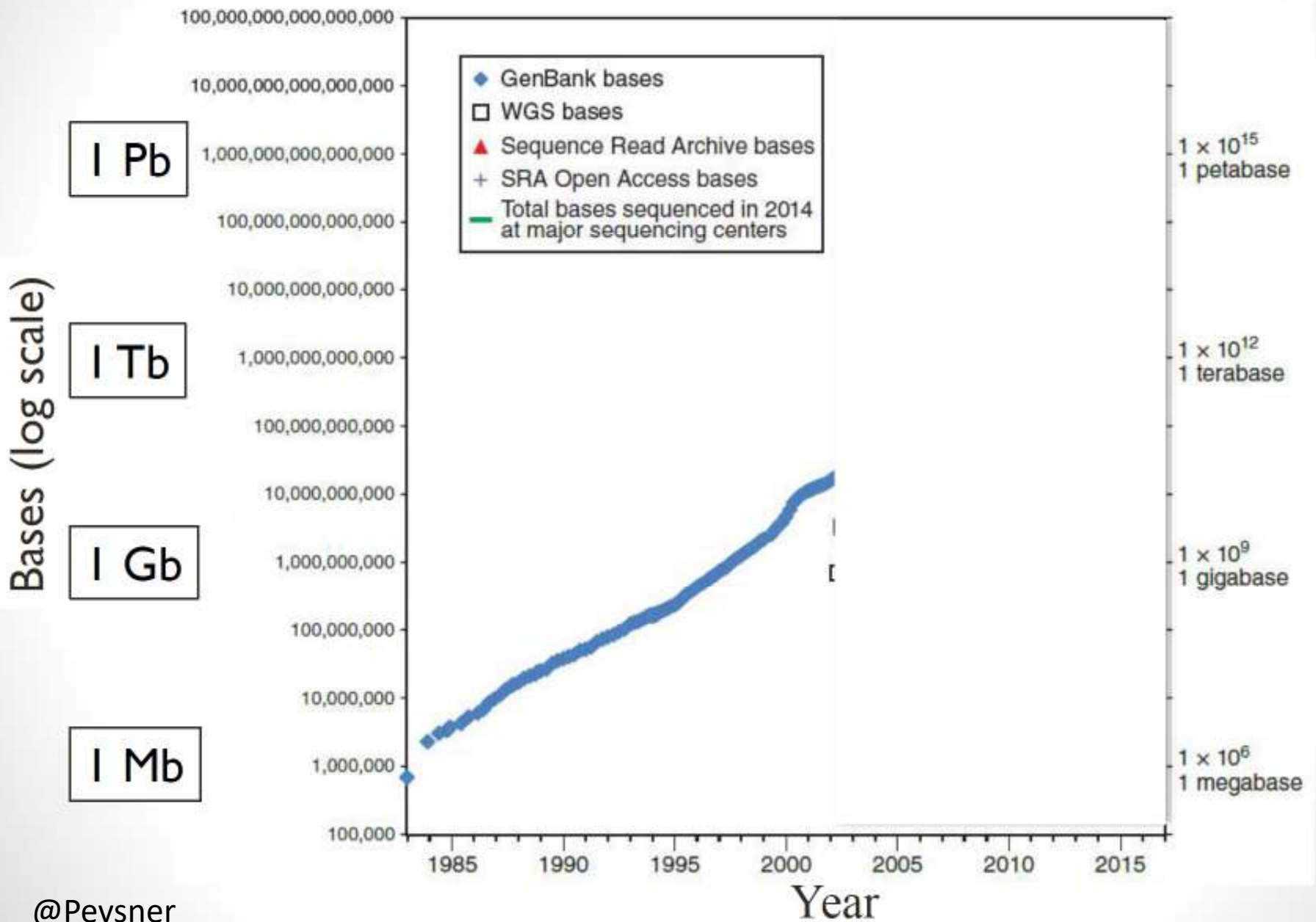
The value of digital curation

Some £3 billion of public money is invested annually in research in the UK alone, yet the research data resulting from this considerable investment are seldom as visible as they might be.

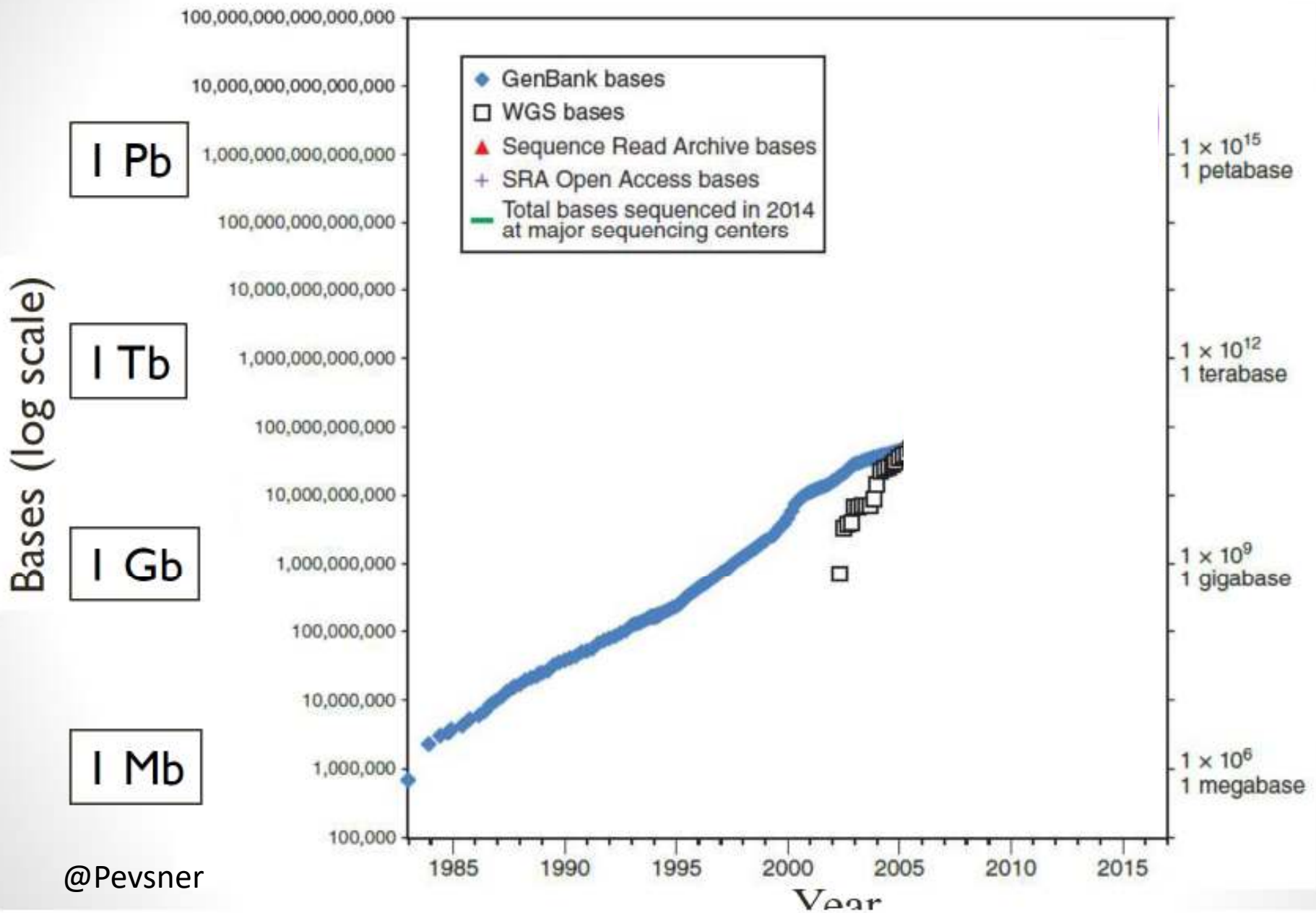
By learning how to preserve and share digital materials so others can effectively reuse them, you will maximise the impact of your research – and inspire confidence among the research councils and funding bodies that invest in your work.



Growth of DNA sequence in repositories

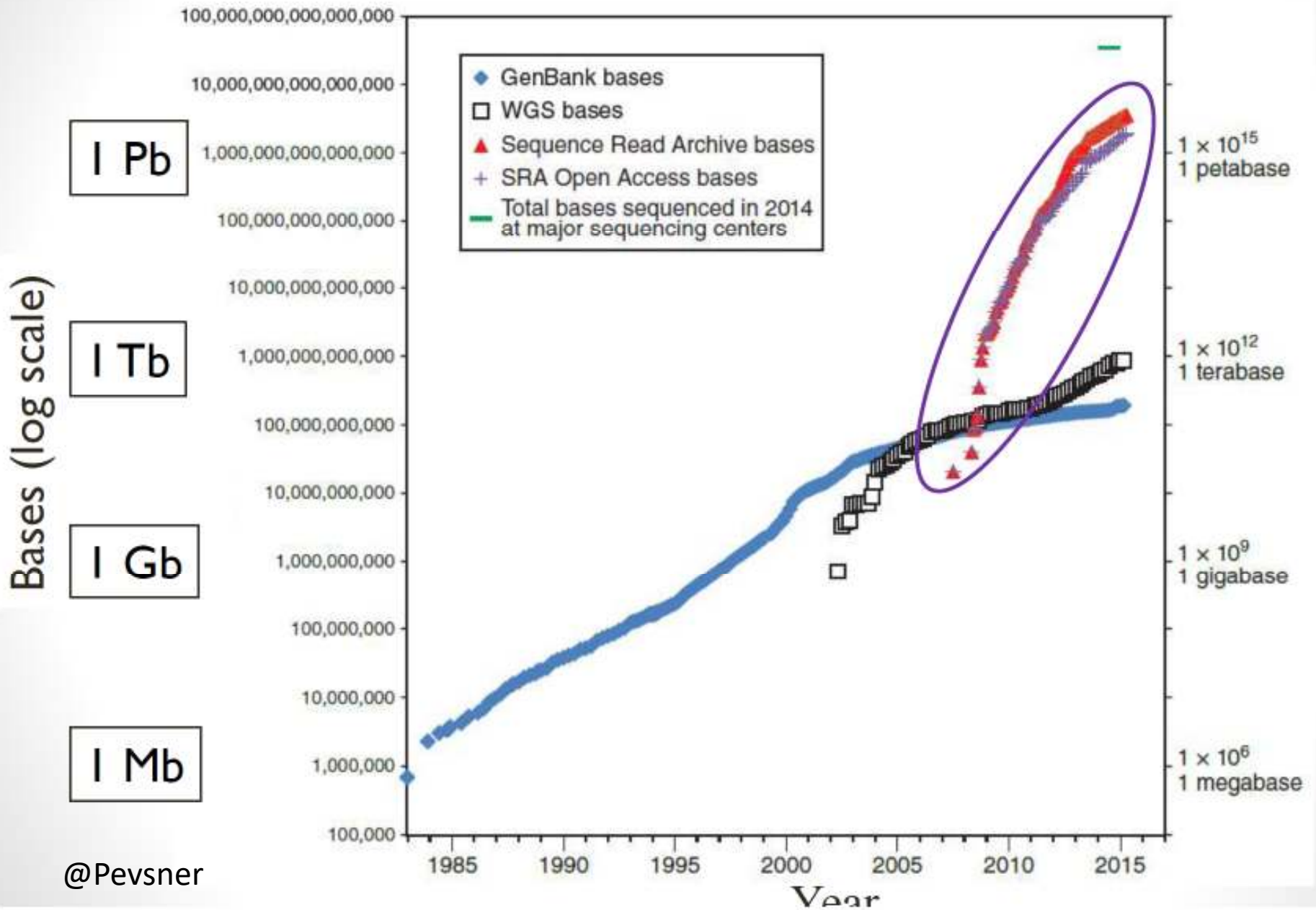


Growth of DNA sequence in repositories



@Pevsner

Growth of DNA sequence in repositories

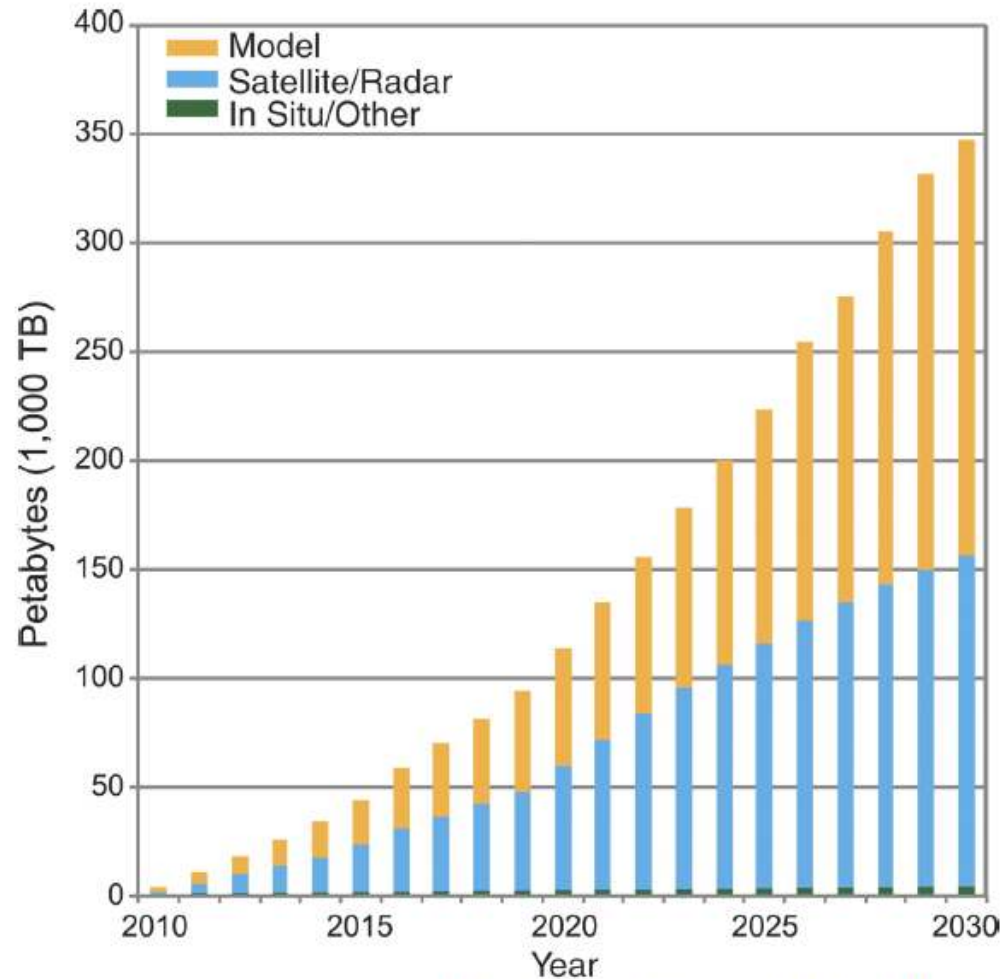


@Pevsner

More Data

Fig. 2 The volume of worldwide climate data is expanding rapidly, creating challenges for both physical archiving and sharing, as well as for ease of access and finding what's needed, particularly if you're not a climate scientist.

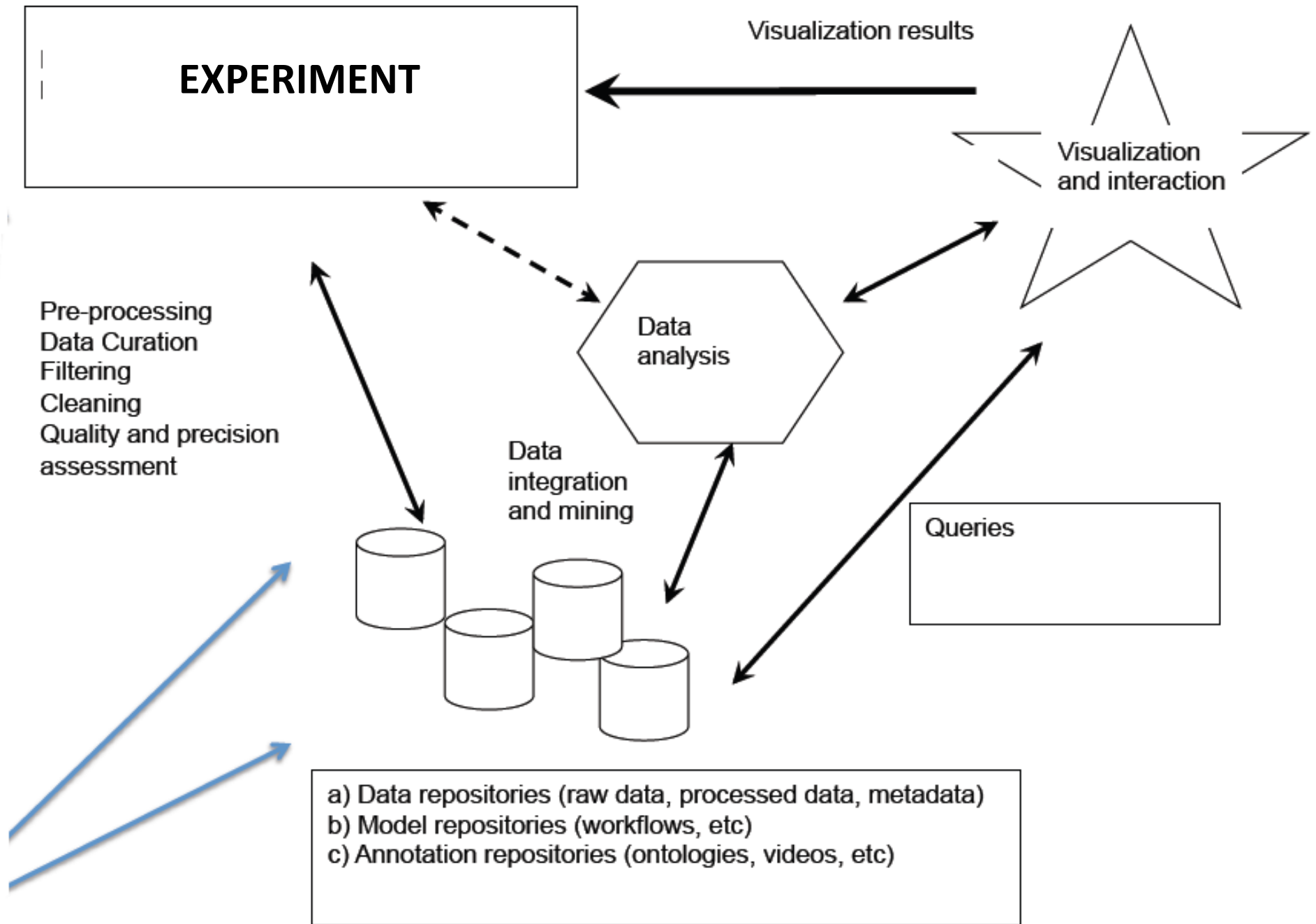
(BNL: Even if you are?)



J T Overpeck et al. Science 2011;331:700-702

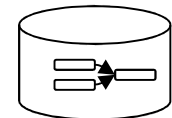
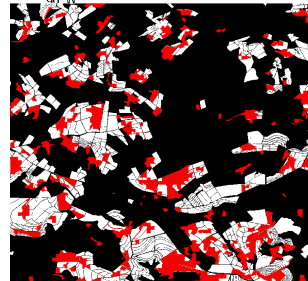
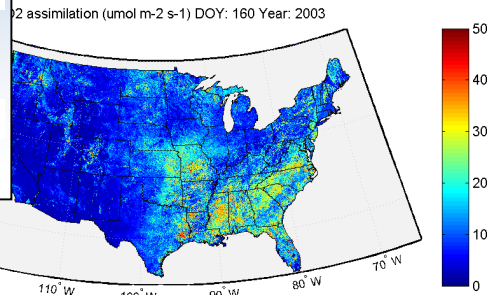
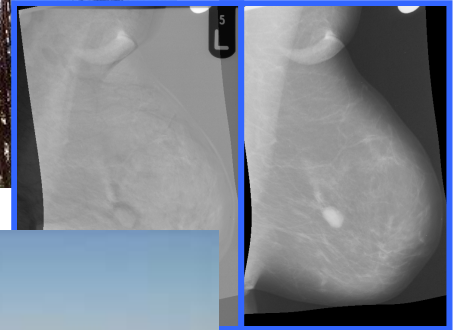
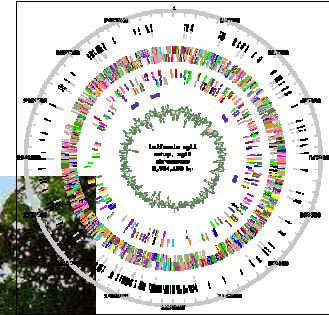
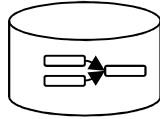
Sharing

- WHAT - DATA
- WHY -
- HOW -
- WHO -



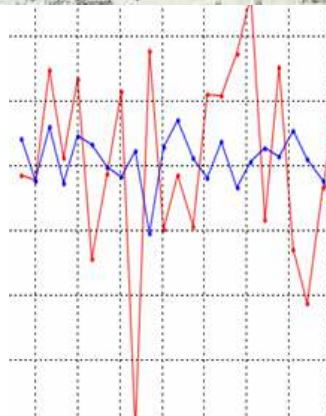
WHAT (is) Data?

Table of Product Characteristics		
id	Property name	Value
MilkProd	productsrep	MilkA
MilkProd	quantity	10000
MilkProd	validity date	10/06/2006
CheeseProd	productsr	Minas
CheeseProd	etquantity	2000
CheeseProd	validity date	12/02/2006
CheeseProd	shape	Circular



Data?

- Direct and indirect observations

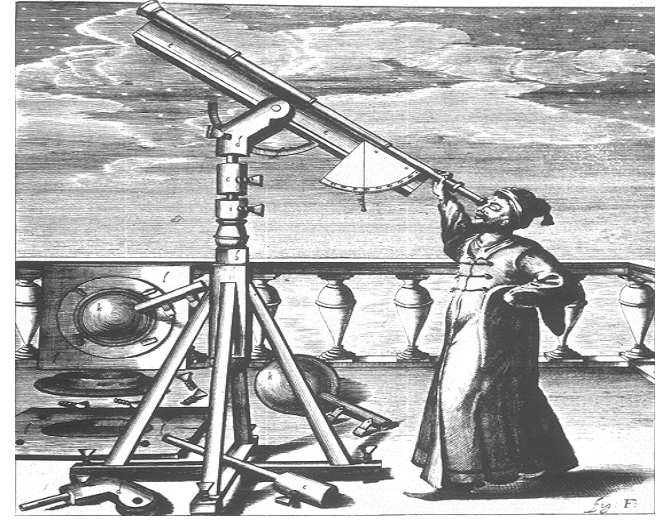
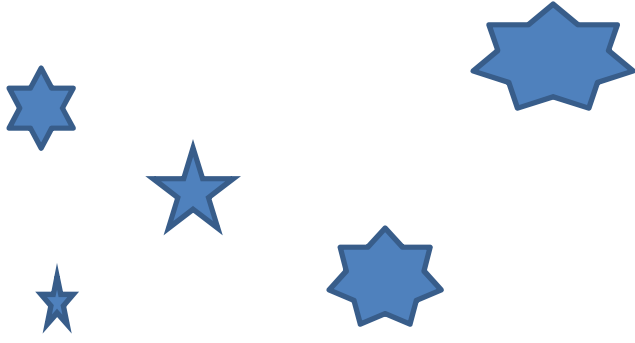


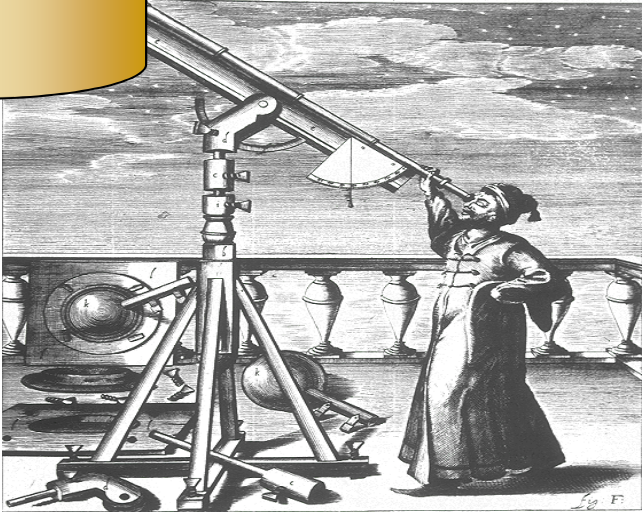
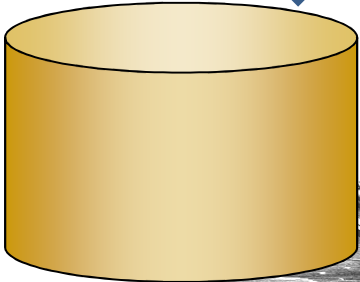
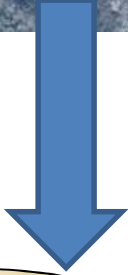
14/10000

Data



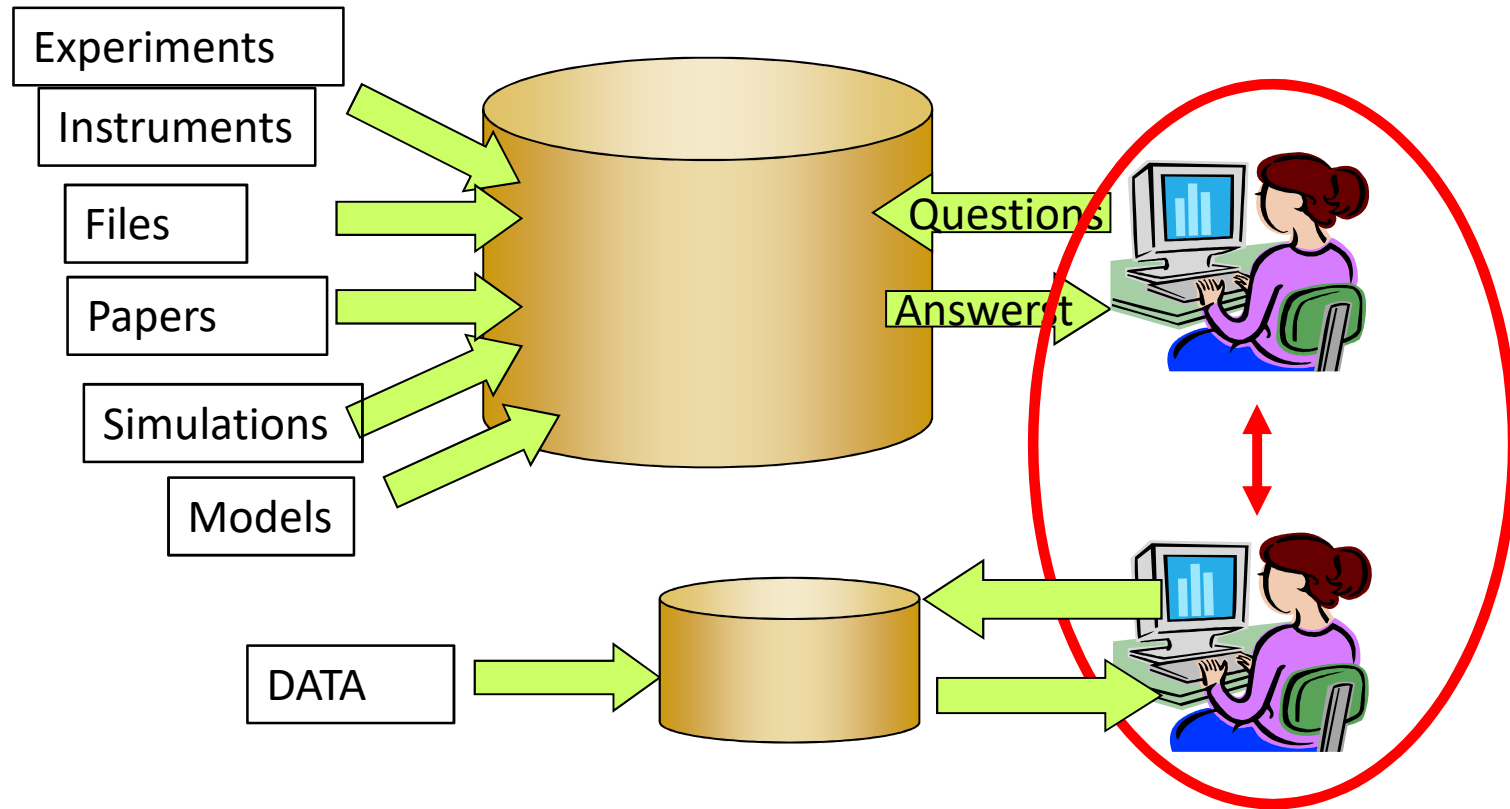






Standards
Formats
Algorithms
Architectures

Slide adapted from Jim Gray



Data-driven science

“Collaboratory”

Sharing

- WHAT - DATA
- WHY - ADVANCE SCIENCE
- HOW –
- WHO –

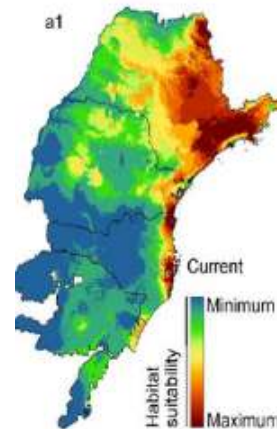
WHY - advance science

- Data sharing has become part of scientific methodology:
- Reproducibility / provenance
- Reuse (and save resources)
- Test new/alternative hypotheses
- Explore topics not envisioned by the initial investigators
- Create new data sets (combination of others)
- Detect fraud

Sharing advances science

Correlations across distinct experiments

- Sturge-Weber Syndrome and uveal melanoma (congenital neurocutaneous disorder; eye cancer)
- Mandacacia bee, climate change and coffee



Sharing

- WHAT - DATA
- WHY - ADVANCE SCIENCE
- HOW – CURATED REPOSITORIES
- WHO –

HOW – Curated Repositories

RCSB
PDB
PROTEIN DATA BANK

An Information Portal to
124286 Biological
Macromolecular Structures

NCBI Resources

GenBank



BIPMed Brazilian Initiative on **PRECISION MEDICINE**

View data repositories

HOW – Data Journal

- Biological sciences:
 - nucleic acid sequence; protein sequence; molecular & supramolecular structure; neuroscience; omics; taxonomy & species diversity; mathematical & modelling resources; cytometry; organism-focused resources
- Health sciences
- Chemistry & chemical biology
- Earth and environmental sciences
- Physics, astrophysics & astronomy
- Social sciences
- Generalist repositories
- Institutional or project-specific repositories



HOW – Institutional Repositories

Stanford Digital Repository

January 2016

1,102 collections

204 million files

212 terabytes

**articles, data sets, theses, photos,
media, maps, manuscripts, books,
and more...**

HOW – Tools and Infrastructures



GitHub



**Software
development**

**Secure file
sharing**



**Share data and
results**

**(Harvard)
Explore research
data**

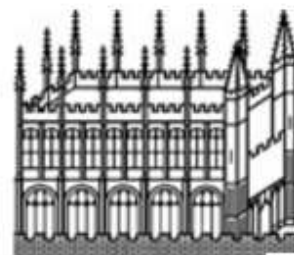
**Citation
manager**

Sharing

- WHAT - DATA
- WHY - ADVANCE SCIENCE
- HOW – CURATED REPOSITORIES
- WHO – DATA LIBRARIAN

WHO - (Research) Data Librarians

- Organization
- Curation
- Support of Researchers



Bodleian Data Library

Bodleian Libraries

UNIVERSITY OF OXFORD

[Homepage](#)

Sharing

- WHAT - DATA
- WHY - ADVANCE SCIENCE
- HOW – CURATED REPOSITORIES
- WHO – DATA LIBRARIAN

Obrigada