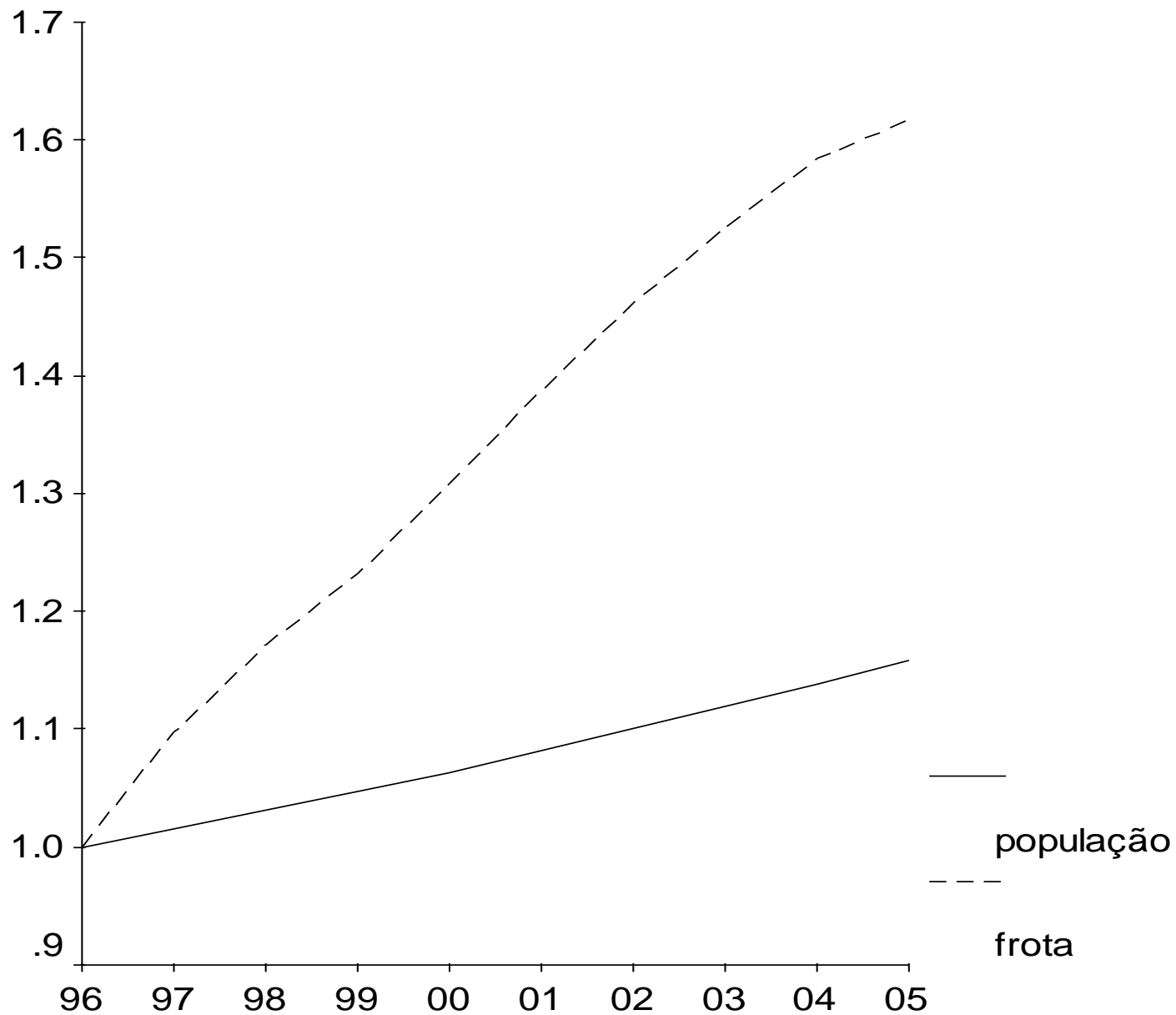
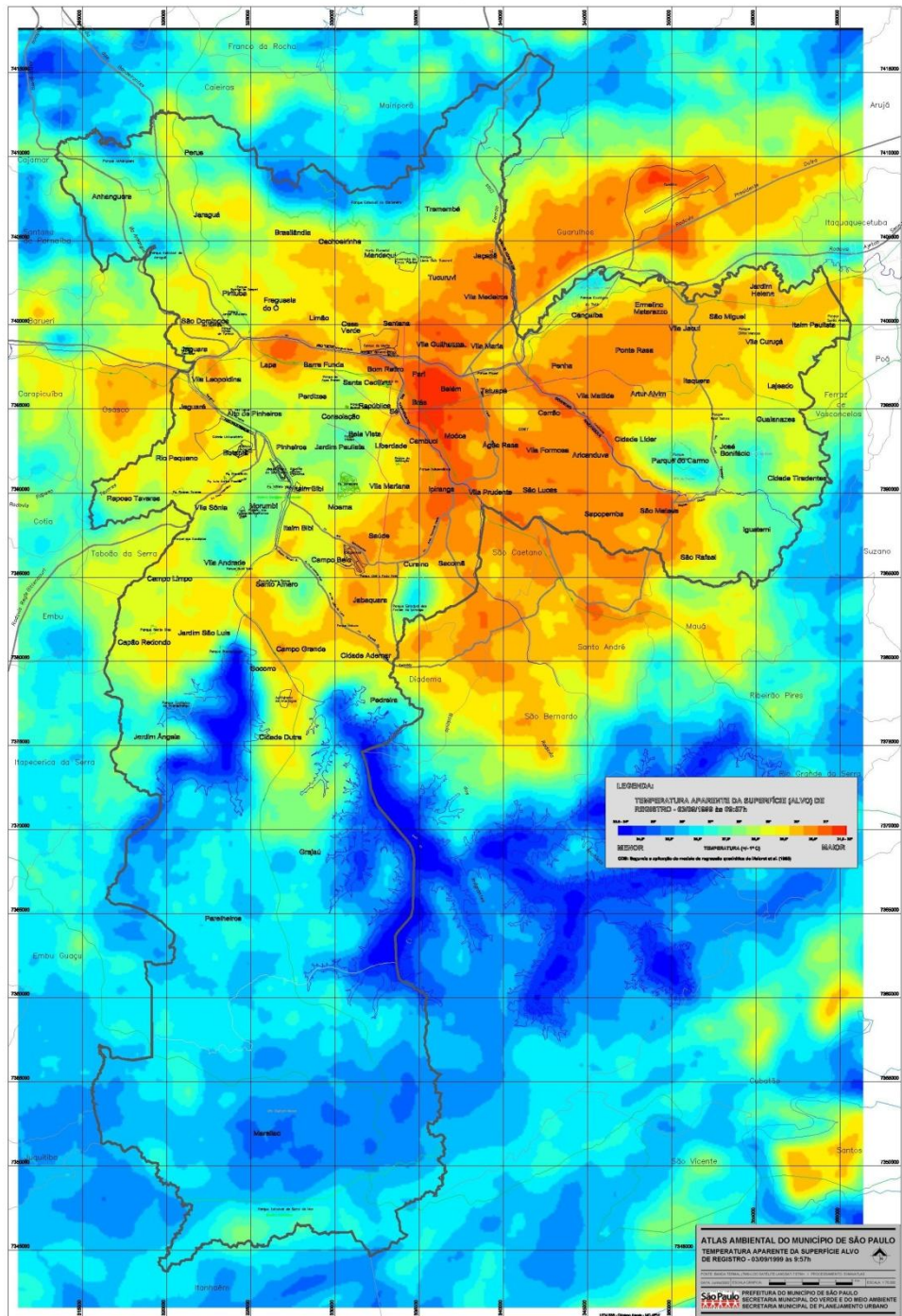
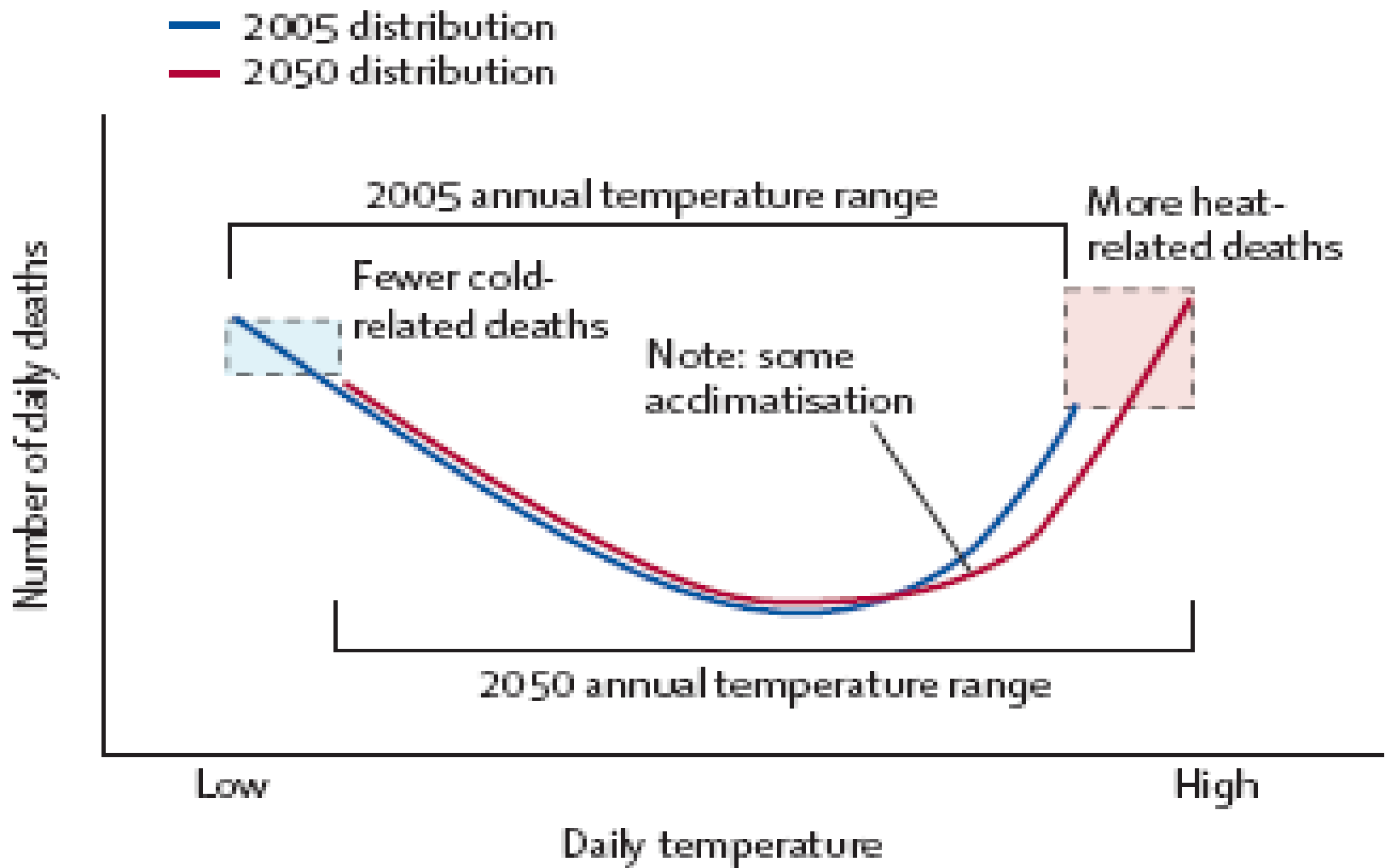


ATLAS AMBIENTAL DO MUNICÍPIO DE SÃO PAULO
IMAGEM DE SATELITE - RECORTE DA COMPOSIÇÃO
DAS BANDAS 541 (RGB) SOBRE PANCRÔMATICA

São Paulo PREFEITURA DO MUNICÍPIO DE SÃO PAULO
SECRETARIA MUNICIPAL DO MEIO AMBIENTE E DO MEIO AMBIENTE
SECRETARIA MUNICIPAL DE PLANEJAMENTO URBANO







McMichael AJ, Woodruff RE, Hales S. 2006. Climate change and human health: present and future risks. *Lancet* 367:859-869



Image © 2005 DigitalGlobe

© 2005 Google

3°33'18.82" S 46°40'15.23" W elev 2697 ft

Streaming  100%

Eye all 4184 ft



Image © 2005 DigitalGlobe

© 2005 Google

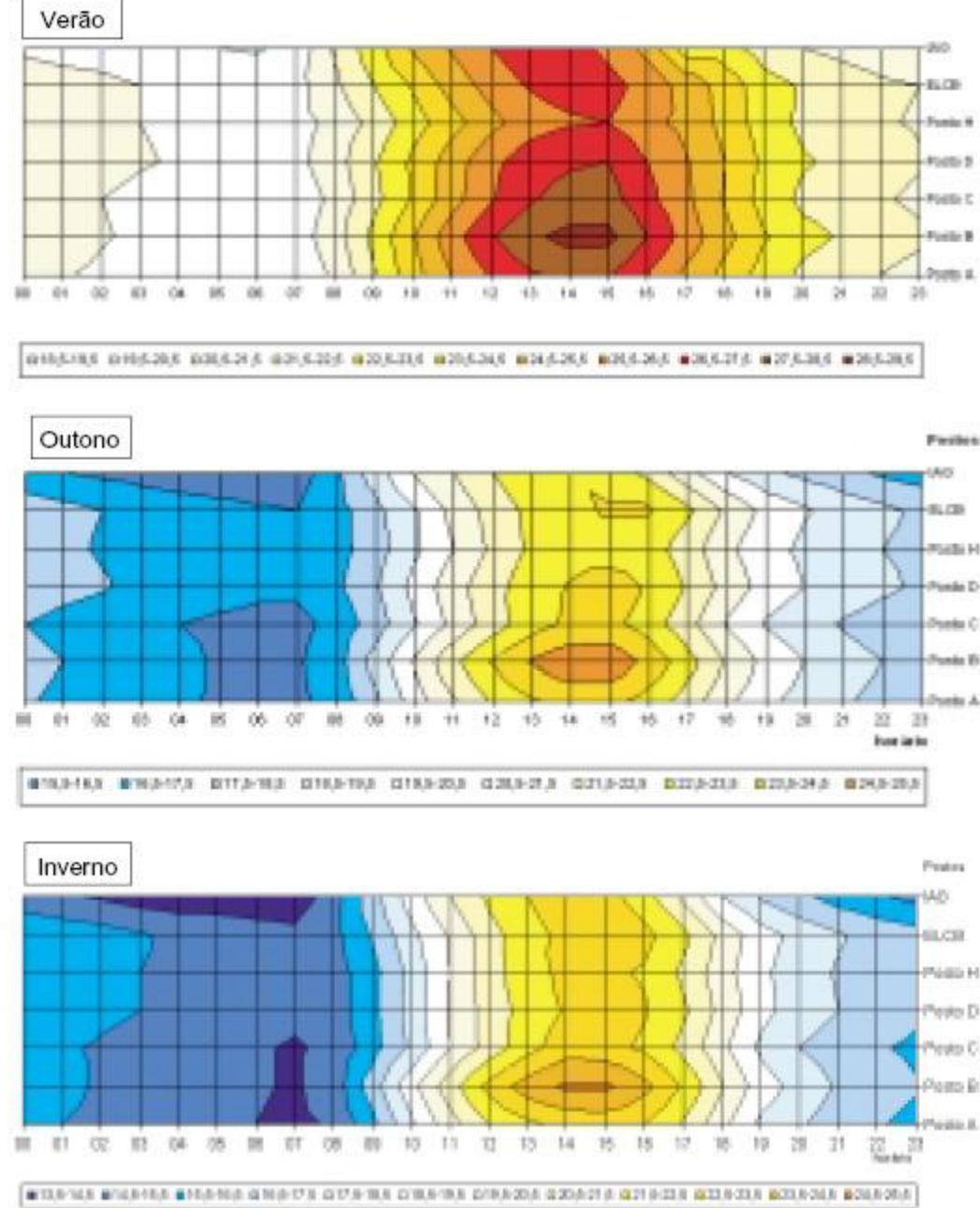


Figura 1 - Temperaturas médias horárias (°C) nos postos da favela Paraisópolis (A, B, C, D), no Morumbi (posto H), Cidade Universitária (ECLB) e parque Fontes do Ipiranga (IAG). São Paulo, fevereiro a julho de 2003.

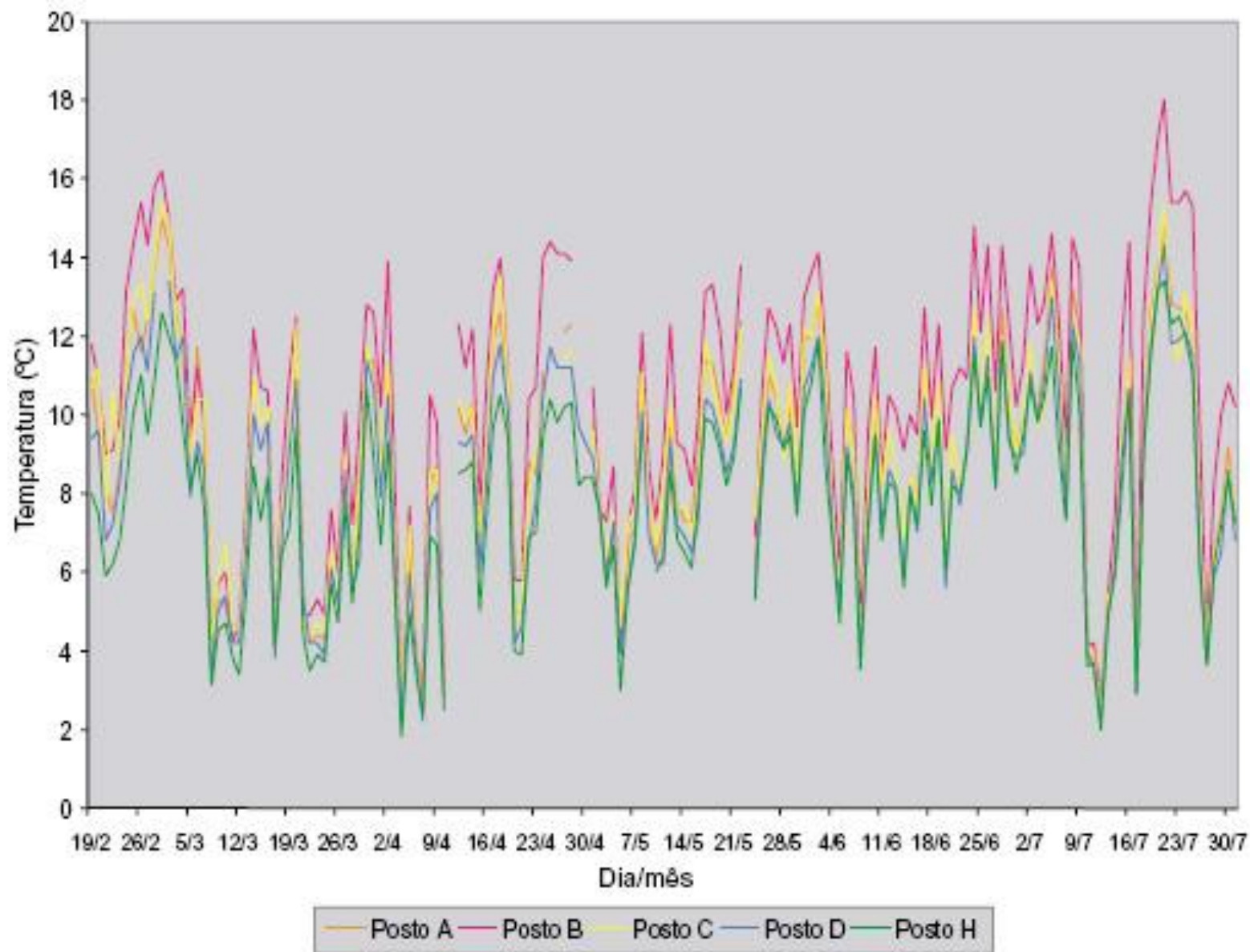
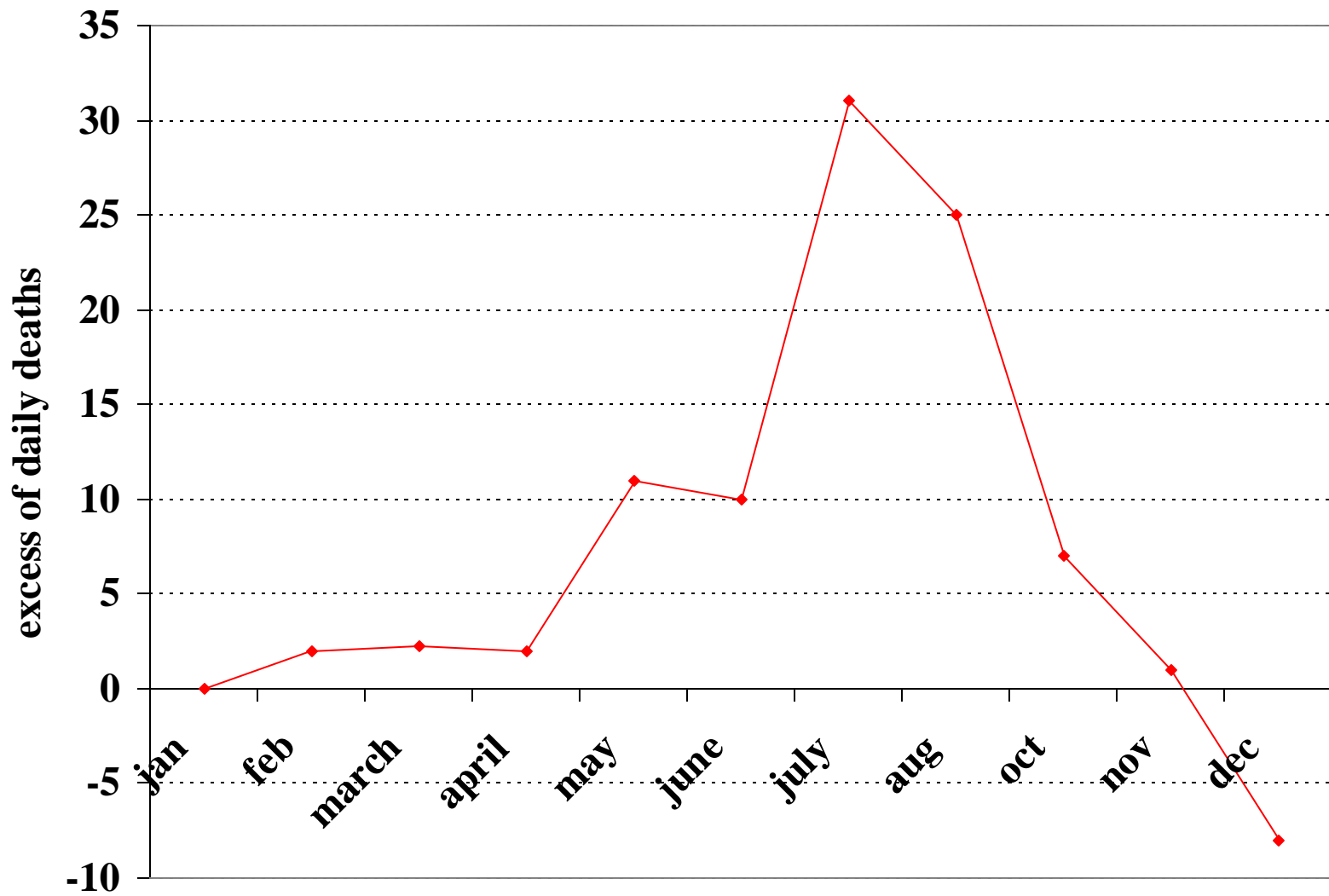
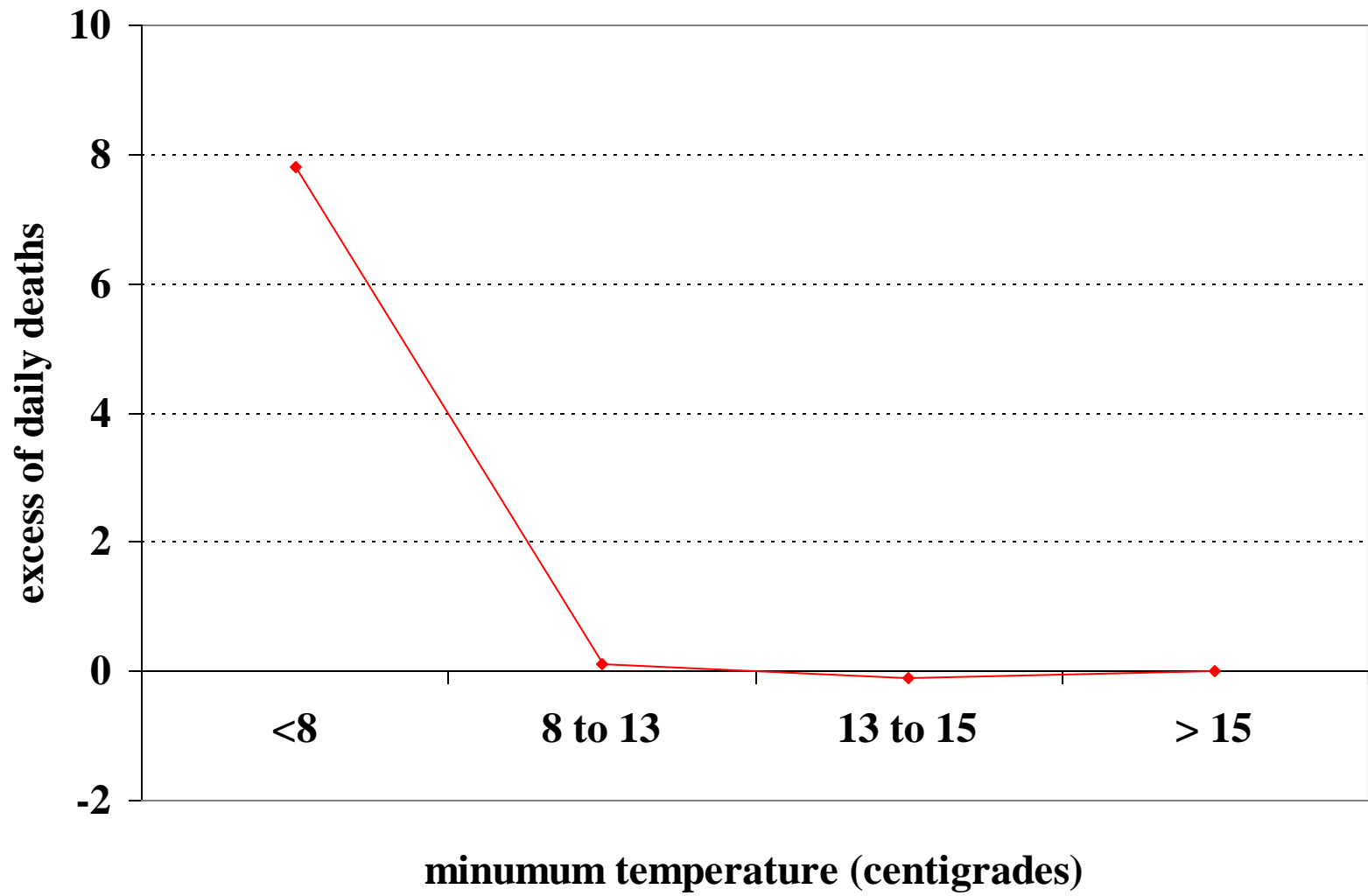
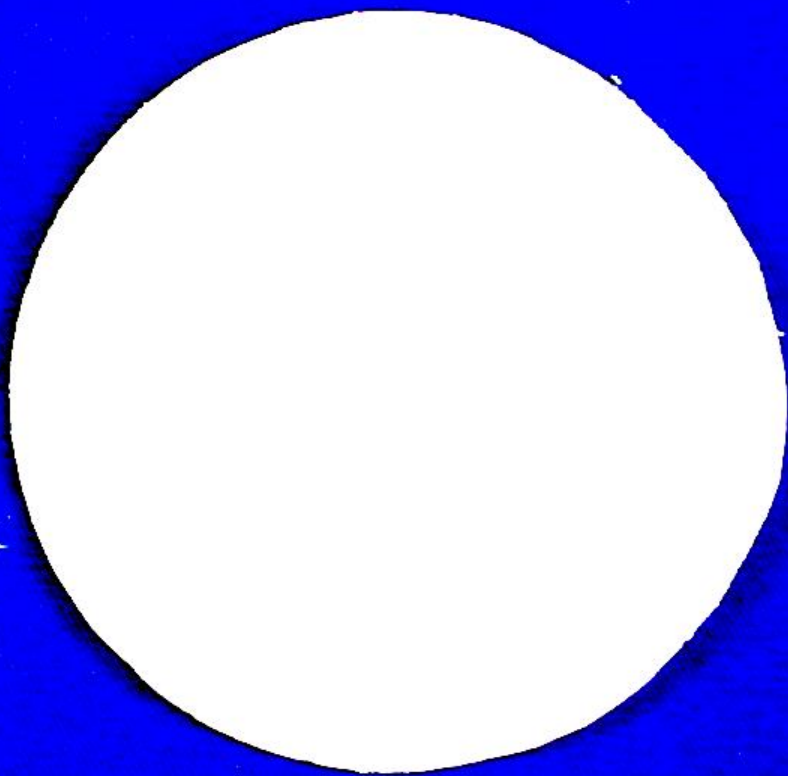
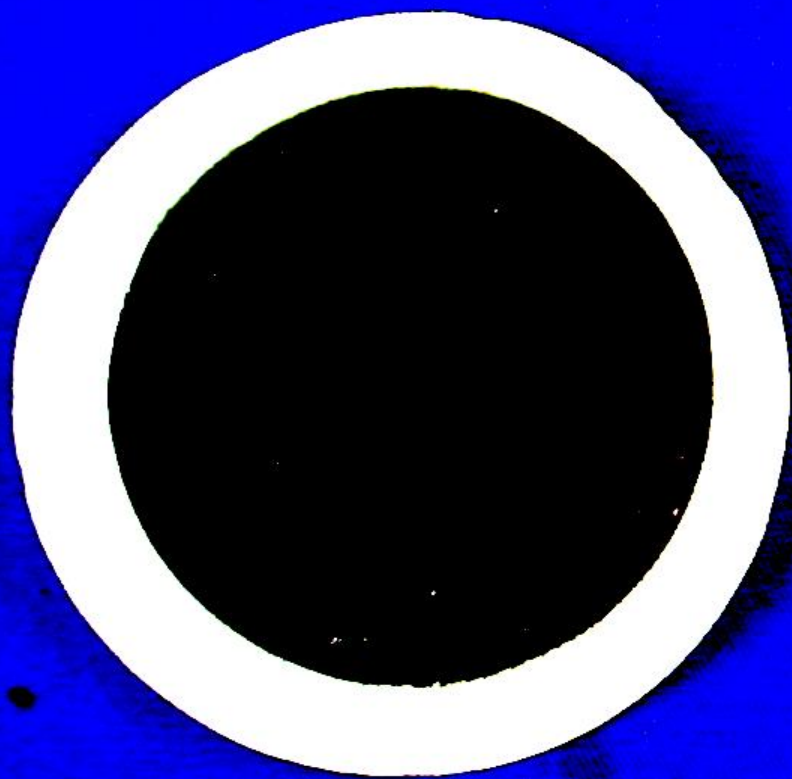


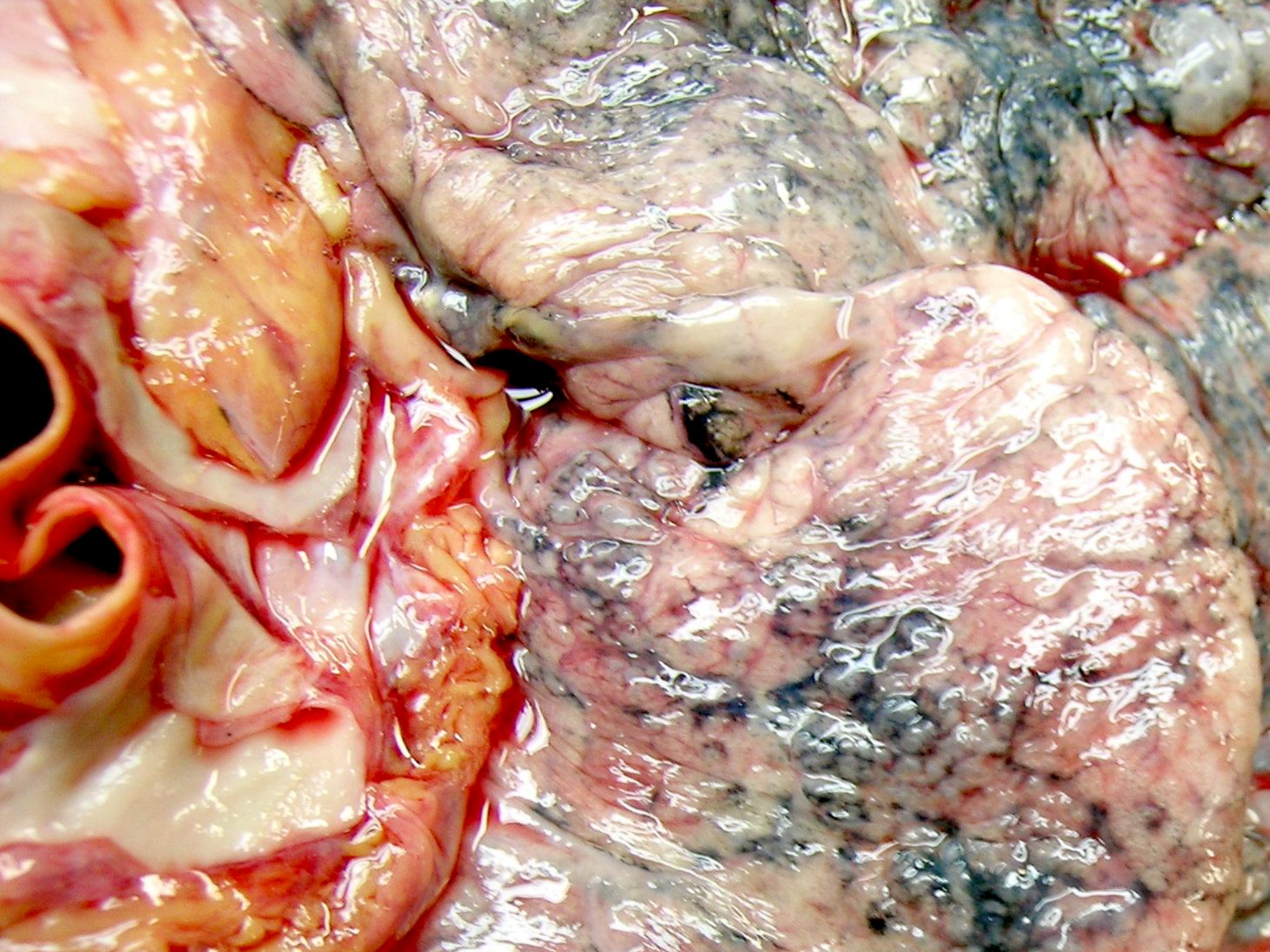
Figura 2 - Amplitudes térmicas diárias (°C) nos postos da favela Paraisópolis (A, B, C, D) e no Morumbi (posto H). São Paulo, fevereiro a julho de 2003.

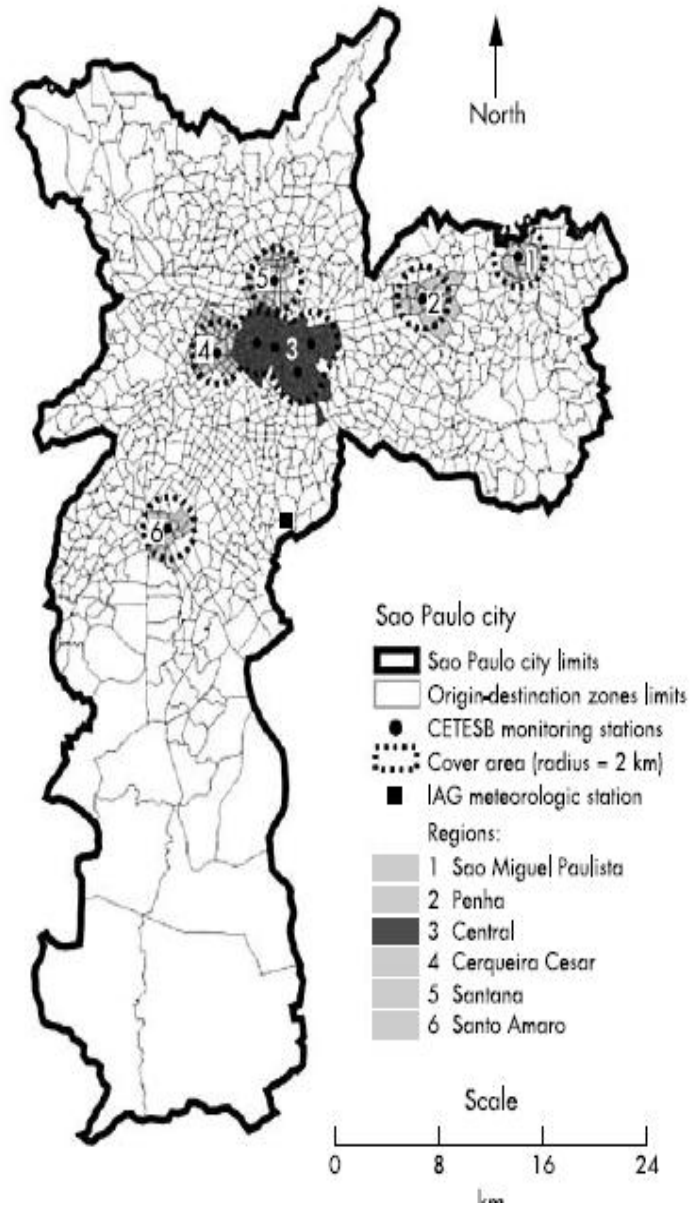












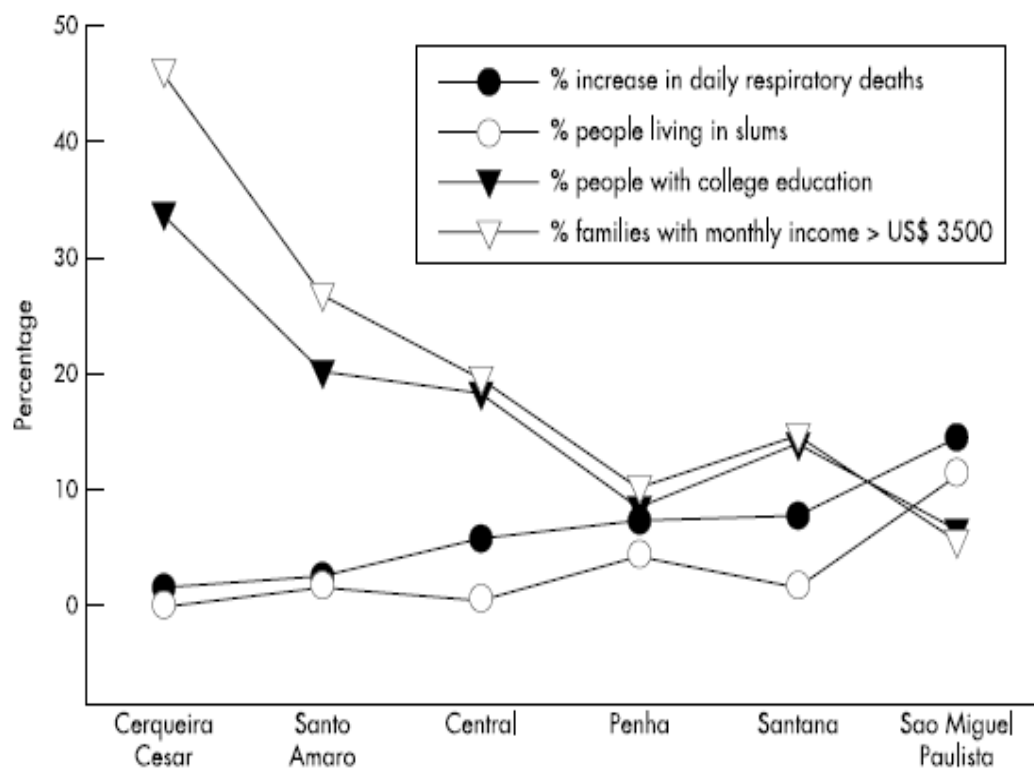
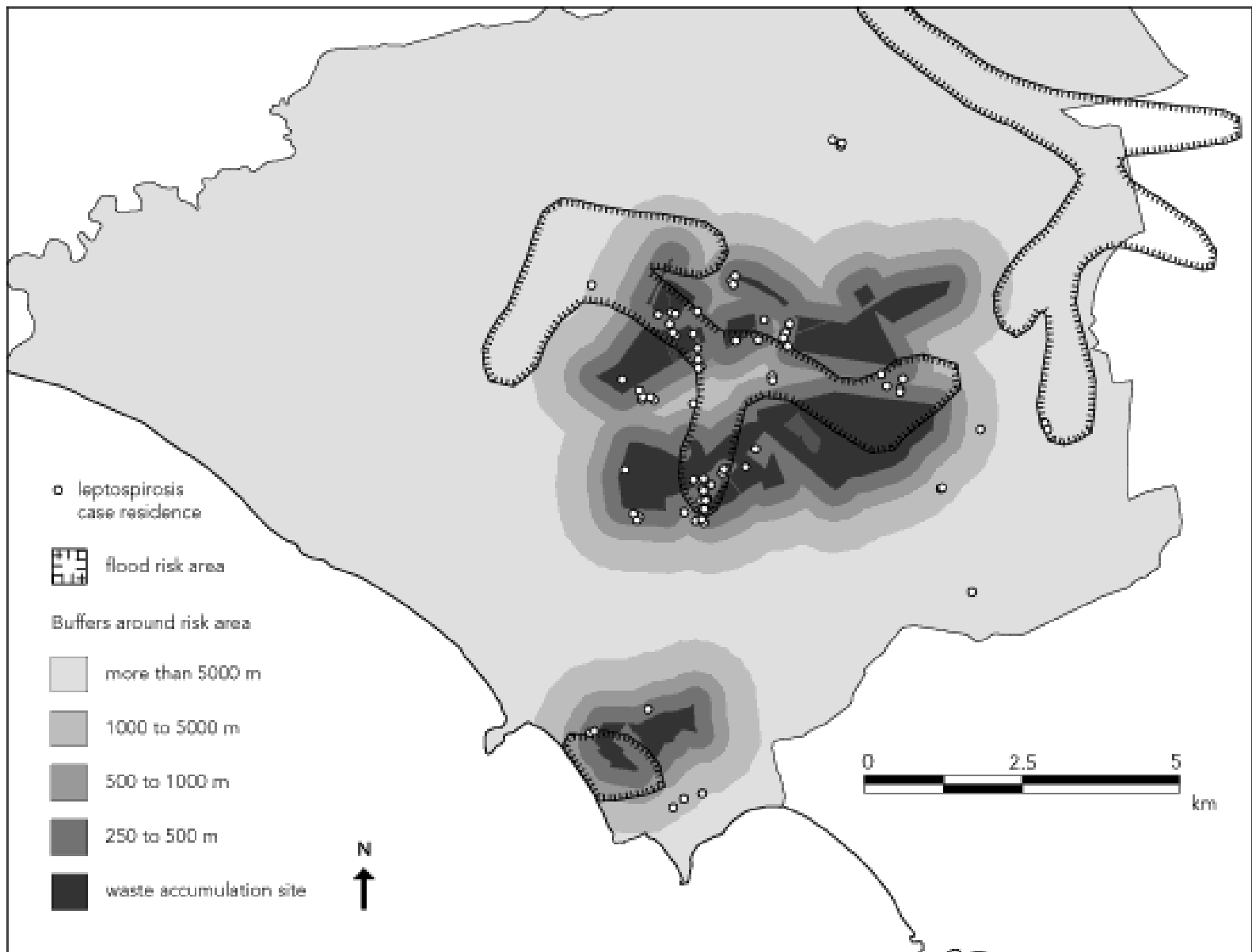


Figure 3 Percentage increase in daily respiratory deaths attributable to a $10 \mu\text{g}/\text{m}^3$ increase in three day moving average of PM_{10} and socioeconomic indicators in each region of the study.









Barcellos and Sabroza. Cad. Saúde Pública, Rio de Janeiro, 17(Suplemento):59-67, 2001