

Overview

Societal Interfaces

*Advanced interaction approaches that are explicitly designed to improve or solve a specific societal aspect, using HCI**

Participatory and Universal Design

systems for all designed with the community itself

Socially Responsible Interaction

The Brazilian Citizen

Usability

Accessibility

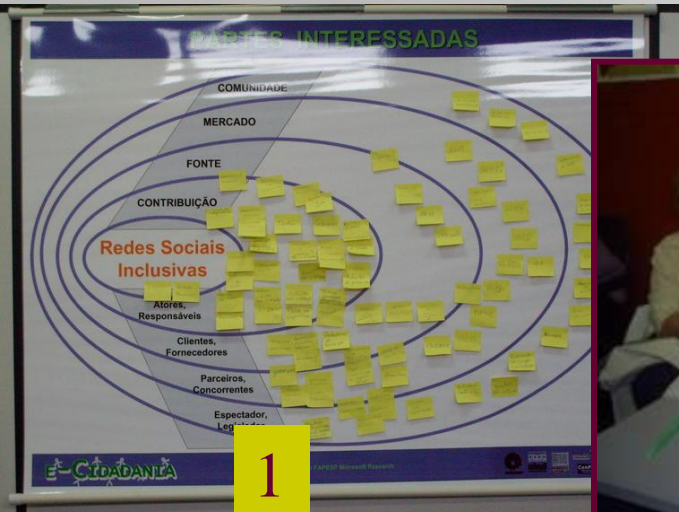
Inclusive Design

Main Achievements so far

- first 6-month
 - *What characterizes social network systems?*
 - *How to align software development with the social aspects of the Project? What type of architecture could support the proposed computational system?*
- second 6-month
 - diving into participatory activities within the community
 - 3 Semio-participatory Workshops
 - design and development activities



The Semio-Participatory Workshops



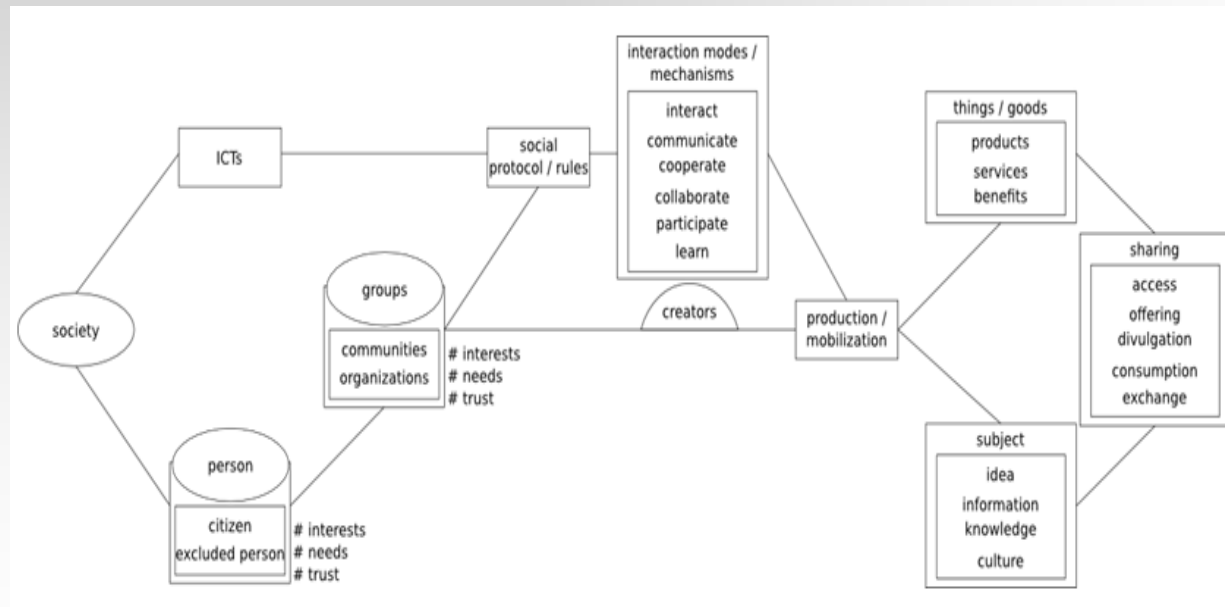
Partes Interessadas	Problemas e Questões	Idéias e Soluções
CONTRIBUIÇÃO Atores, Responsáveis	[Sticky notes]	[Sticky notes]
FONTE Clientes, Fornecedores	[Sticky notes]	[Sticky notes]
MERCADO Parceiros, Concorrentes	[Sticky notes]	[Sticky notes]
COMUNIDADE Espectador, Legislador	[Sticky notes]	[Sticky notes]



Design *for All*
With the User

an inclusive social network

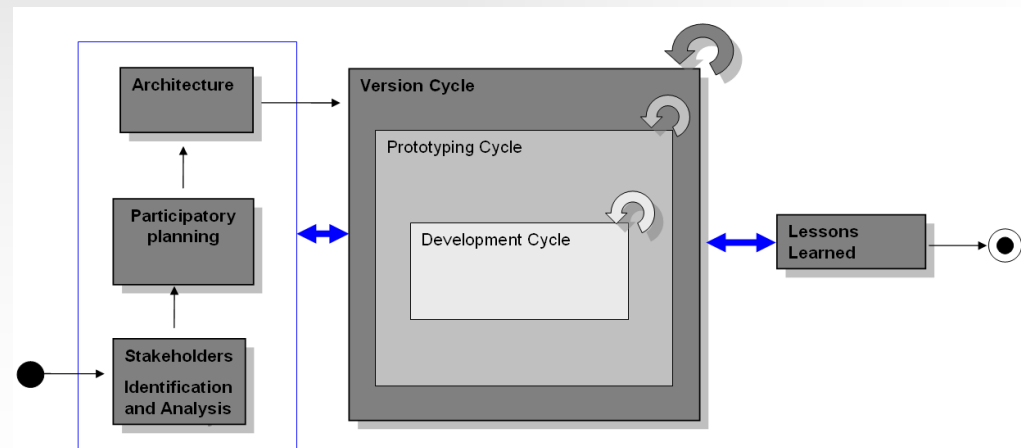
- problem clarification, semantic and norm analysis, user interaction requirements



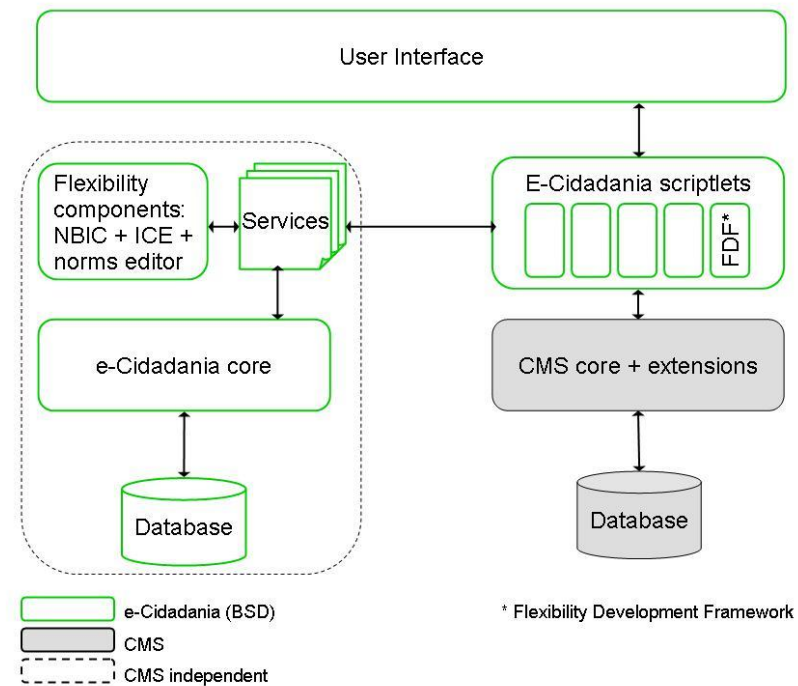
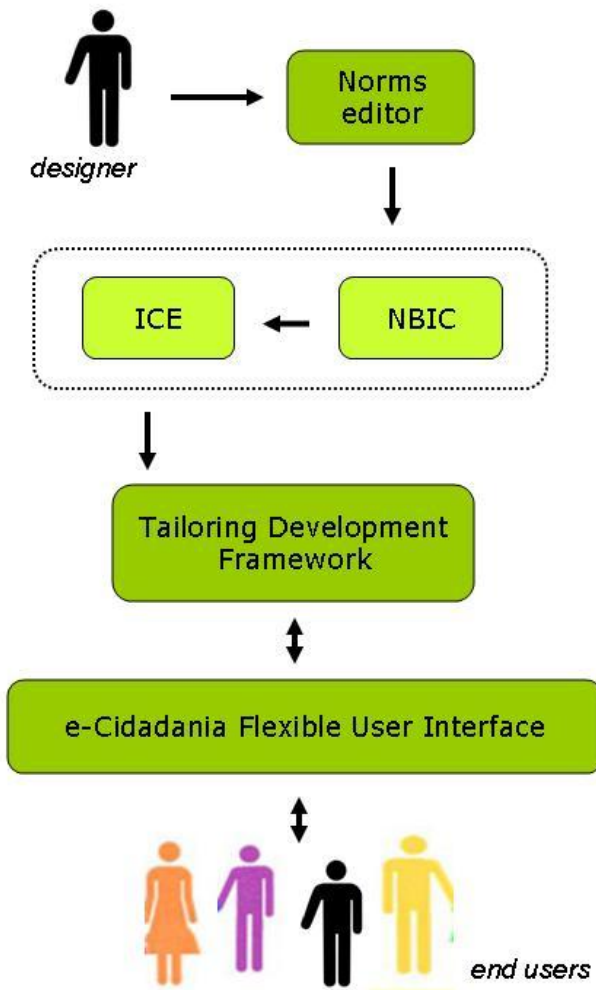
Ontology Chart

towards the software system

- system requirements and architecture specification, a proposition of a development process model, a first approximation for the UI design of a prototype



flexibility at the user interface



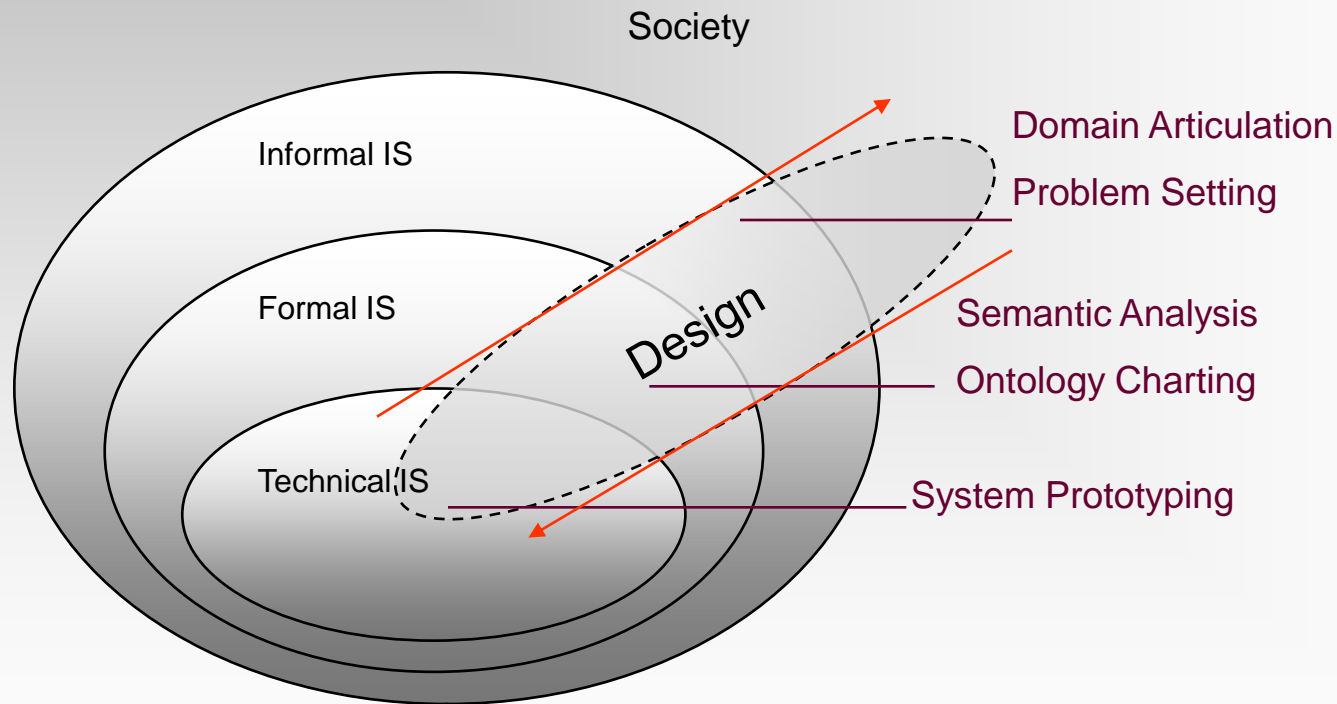
design solutions



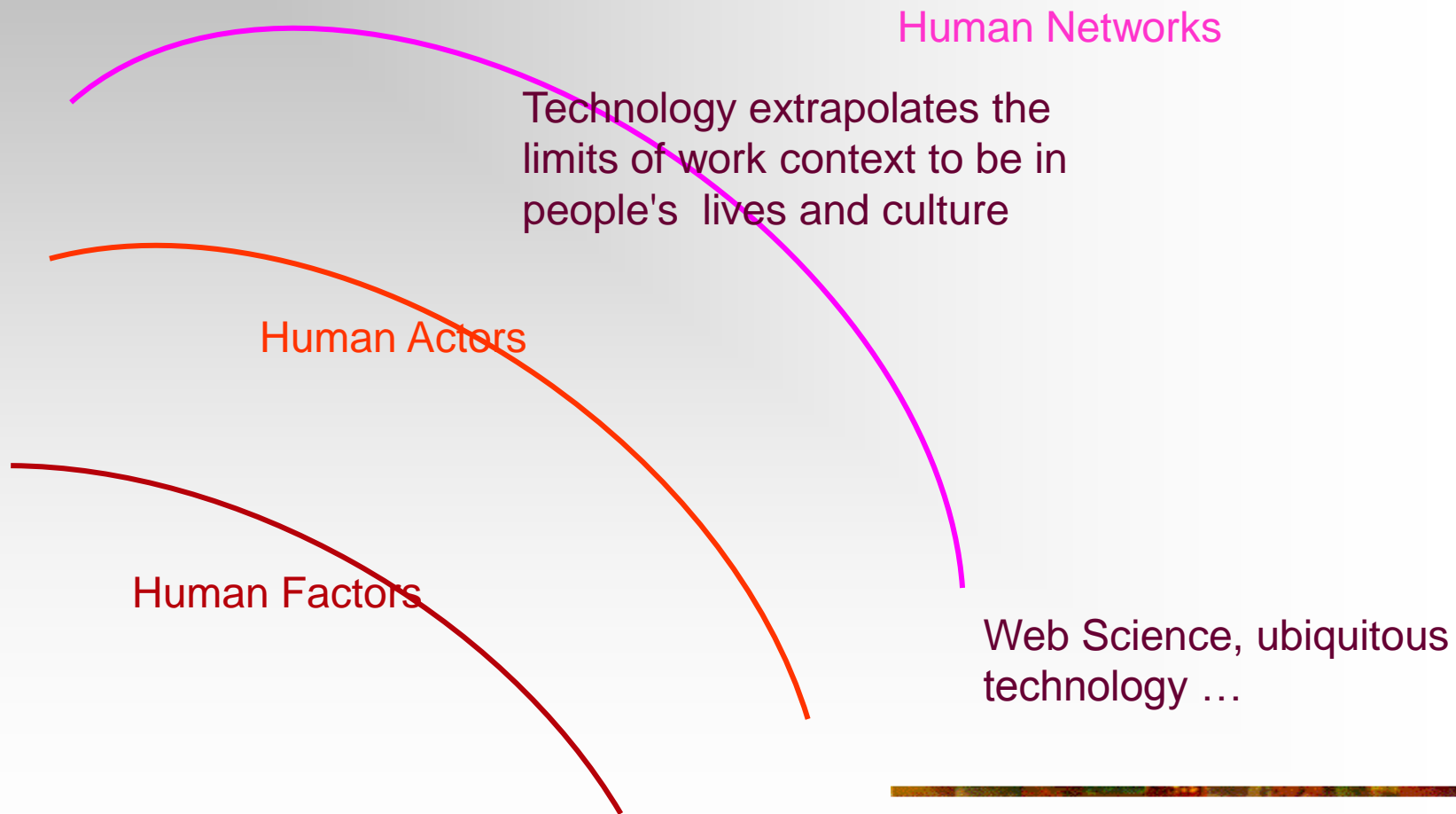
tailoring
awareness
communication

managing audio
and video devices
through the web

The Science behind the Project

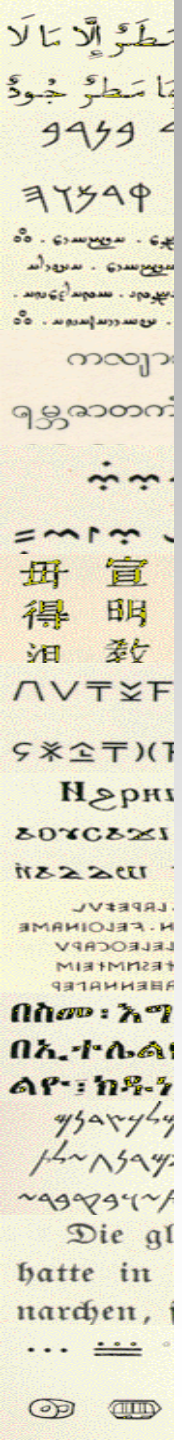


The third wave in HCI



Acknowledgements

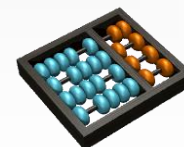
- CTI-CenPRA
- NIED, IA, IC - UNICAMP
- CRJ, Jovem.Com, Casa Brasil –
Secretaria de Cidadania da Prefeitura
Municipal de Campinas
- Instituto Microsoft Research-FAPESP de
Pesquisas em TI



Thank you!

cecilia@ic.unicamp.br

www.nied.unicamp.br/ecidadania



UNICAMP

Instituto de Computação

The Research Team

- M. Cecília C. Baranauskas, Maria Cecília Martins, Rodrigo Bonacin, José Armando Valente, João Vilhete V. D`Abreu, Marcos Augusto Francisco Borges, Maria Elisabeth B. Brito Prado, Marcos A. Rodrigues, Rita M. M. Khater, Gianfrank Miranda de Souza
- Vânia de Almeida Neris, Leonelo Dell Anhol Almeida, Heiko Hornung, Leonardo Cunha de Miranda, Tânia Cristina Lima, Carla Rodriguez, Vagner Figuerêdo de Santana, Elaine C. S. Hayashi, Frederico Fortuna, Anderson Philip Birocchi, Fernanda Brandão, Diogo Moreira Bispo, Greice Cristina Mariano

Related Publications

Papers

- 1. Bonacin, R., Melo, A.M., Simoni, C.A., Baranauskas, M.C.C. Accessibility and Interoperability in e-Gov Systems: Outlining an Inclusive Development Process (paper accepted for publication in the Universal Access in the Information Society International Journal) 34p.
- 2. Bonacin, R., Baranauskas, M.C.C, Liu, K., Sun, L. Norms-Based Simulation for Personalized Service Provision (paper accepted for publication in the Semiotica: Journal of the International Association for Semiotic Studies) 20p.
- 3. Almeida, L. D.A., Baranauskas, M.C.C. Um Prospecto de Sistemas Colaborativos: Modelos e Frameworks. Anais do VIII Simpósio Brasileiro sobre Fatores Humanos em Sistemas Computacionais, IHC2008, p. 204-213
- 4. Miranda, L. C. ,Piccolo, L., Baranauskas, M.C.C. Artefatos Físicos de Interação com a TVDI: Desafios e Diretrizes para o Cenário Brasileiro. Anais do VIII Simpósio Brasileiro sobre Fatores Humanos em Sistemas Computacionais, IHC2008, p. 60-69
- 5. Neris, V. P. A. ; MARTINS, M. C. ; Prado, M.E.B. ; Hayashi, E.C.S. ; BARANAUSKAS, M. C. C. . Design de Interfaces para Todos: Demandas da Diversidade Cultural e Social. In: XXXV SEMISH, Seminário Integrado de Software e Hardware, XXVIII Congresso da SBC. Sociedade Brasileira de Computação, 2008, Belém. Anais do XXVIII Congresso da SBC, 2008. v. 1. p. 76-90.
- 6. BARANAUSKAS, M. C. C. ; Hornung, H. ; MARTINS, M. C. . Design Socialmente Responsável: Desafios de Interface de Usuário no Contexto Brasileiro. In: XXXV SEMISH, Seminário Integrado de Software e Hardware, XXVIII Congresso da SBC Sociedade Brasileira de Computação, 2008, Belém. Anais do XXVIII Congresso da SBC, SEMISH Seminário Integrado de Software e Hardware, 2008. p. 91-105.
- 7. Hayashi, E.C.S. ; BARANAUSKAS, M. C. C. . Facing the digital divide in a participatory way - an exploratory study. In: IFIP 20th World Computer Congress, 1st TC 13 Human-Computer Interaction Symposium (HCIS 2008), 2008, Milão. FIP 20th World Computer Congress, Proceedings of the 1st TC 13 Human-Computer Interaction Symposium (HCIS 2008). Boston : Springer, 2008. p. 143-154.

Technical Reports

- 1. Awareness em sistemas colaborativos: Conceitos e desafios. Leonelo D. A. Almeida and M. Cecília C. Baranauskas. September 2008. In Portuguese, 17 pages. IC-08-23
- 2. Requisitos de Interação para o Design de Interfaces para Todos. Vania Paula de Almeida Neris and Maria Cecília Calani Baranauskas. In Anais do 4o workshop de teses de doutorado em andamento do IC-UNICAMP, p 84-88 IC-08-25
- 3. An Asynchronous Client-Side Event Logger Model. Vagner Figuerêdo de Santana and Maria Cecilia Calani Baranauskas. October 2008. In Portuguese, 15 pages. IC-08-28
- 4. Inclusive Social Networks: Clarifying Concepts and Prospecting Solutions for e-Cidadania. Elaine C. S. Hayashi, Vânia P. de A. Neris, Leonelo D. A. Almeida, C. L. Rodriguez, M. Cecilia Martins, M. Cecilia C. Baranauskas. October 2008. In English, 22 pages. IC-08-29
- 5. Clarifying the dynamics of social networks: narratives from the social context of e-Cidadania. Elaine C. S. Hayashi, Vânia P. de A. Neris., Leonelo D.A. Almeida., Leonardo C. Miranda, M. Cecília Martins., M. Cecília C. Baranauskas. October 2008. In English, 34 pages. IC-08-30
- 6. An Architecture to Integrate Content Management Systems and Web Applications. Almeida, L.D.A.; Santana, V.F.; Bispo, D.M.; Baranauskas, M.C.C. IC_08-08
- 7. AIPM: an Agile Inclusive Process Model. Bonacin, R. Rodrigues, M.A.; Baranauskas, M.C.C [RelTec_IC_08-09
- 8. Bringing Human-Computer Interaction to an Agile Process Model. Hornung, H.H.; Hayashi, E.C.S.; Neris, V.P.A.; Almeida, L.D.A.; Baranauskas, M.C.C. IC_08-10
- 9. An Exploratory Design for Inclusive Social Networks. Almeida, L.D.A.; Neris, V.P.A.; Hayashi, E.C.S.; Hornung, H.H.; Martins, M.C.; Baranauskas, M.C.C. IC_08-11